



Engage | Learn | Improve



MISSION:

Engage. Learn.
Improve.

VISION:

The relentless pursuit
of excellence, one
person at a time.

Our School Board



Joel Woppert, Christine Stueland, Sarah Renn, Shelley Holzman,
Nina Christensen, Jennifer Grant, Keri Duce



**MENOMONEE FALLS
SCHOOLS**

Engage
Learn
Improve

OUR BIG AIMS

- All students successfully transition to college and work prepared for their future.
- All students and families feel they belong in our school community.
- All students and adults are engaged, learning and improving.
- All students, families and staff members feel we are a School District of Choice.

ALL IN!



**MENOMONEE FALLS
SCHOOLS**

Engage
Learn
Improve

GUIDING PRINCIPLES

- **Physical Health and Safety of Students**
- **Physical Health and Safety of Employees**
- **Social and Emotional Health of Students, Parents, Employees, Community**
- **Sustaining Student Learning**
- **District Financial and Operational Stability**
- **Economic Stability of Employees**
- **Community Support**

Professionalism

- Commit to ongoing learning and be open to change
- Take personal ownership of your development to continuously improve
- Maintain a strong work ethic
- Maintain a professional appearance in alignment with your job responsibilities
- Deliver your best work in all you do

Teamwork

- Collaborate with others to help the district problem solve and achieve its goals
- Work together in a supportive manner by being dependable, trustworthy, and flexible
- Embrace diversity of thought and perspective
- Look beyond your defined role to support the mission, vision, and Big Aims of the district
- Be open and honest when giving and receiving feedback
- Celebrate success by recognizing the good work of others

Communication

- Greet others in a positive and welcoming way
- Actively listen with compassion and understanding
- Respond to all forms of communication in a timely and effective way
- Communicate with sincerity, honesty, and respect
- Listen to gain understanding and value the voices and talents of others
- Actively build positive connections with others

Respect

- Display a positive and empathetic attitude toward others
- Recognize the value of everyone
- Create a sense of belonging and dignity, ensuring all are seen and heard
- Maintain confidentiality and privacy
- Support and encourage others to achieve their goals
- Assume positive intent by others

Accountability

- Take ownership of issues that come to you and follow through to resolution
- Act honestly, morally, and ethically
- Demonstrate reliability and dependability in your work and interactions with others
- Hold yourself responsible for your performance
- Be prepared and fulfill commitments

*Service Excellence through
our Guiding Principles*

Thank you for sustaining a
culture and infrastructure
to live our mission and
vision.

ENGAGE | LEARN | IMPROVE

Continuous Improvement Implementation Plan 2023-2024



- August Professional Development: Building Clear Direction
- Baseline Survey, CI in Menomonee Falls Guiding Document
- End of September: Classroom Mission
- End of October: Long-Term Goals and “I Can” Statements
- End of November: Charting & Analyzing Results
- End of December: Building Clear Direction Alive in ALL Classrooms & Mid-Year Survey
- February Professional Development: Continuous Quality Improvement Cycles - PDSA
- February - June: Implementation of PDSA Cycles
- May: End-of-Year Survey

Continuous Improvement Implementation Plan 2024 and Beyond



- Full implementation of all eight components of Continuous Quality Improvement in ALL classrooms as evidenced from active involvement and actions by teachers, students and teams.
- Fall 2025: Possible District CI Visits

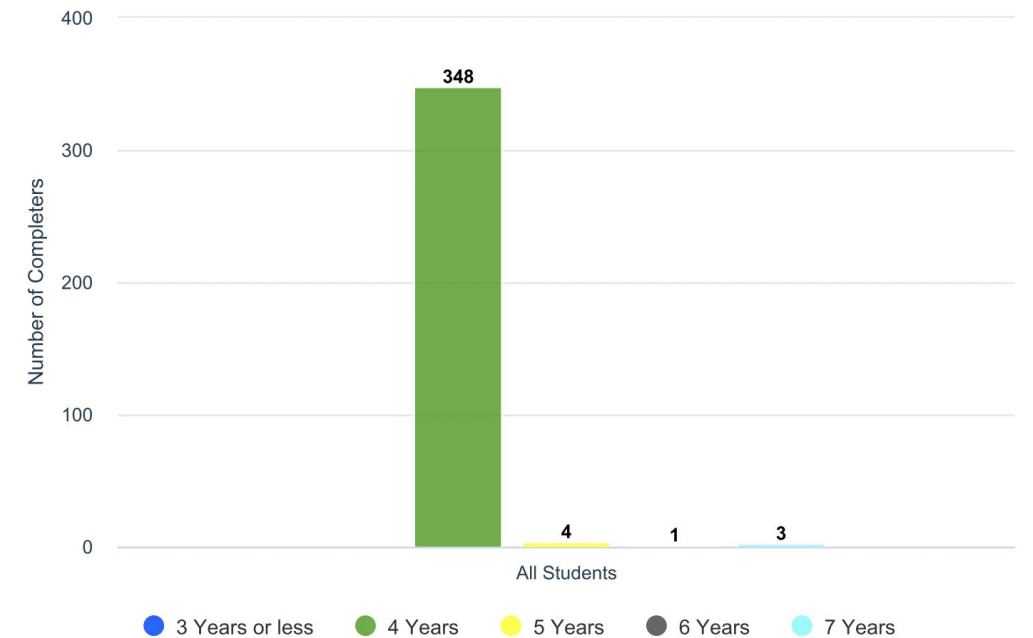
Graduation Rate

Years to HS Completion by [All Students] (2021-22)

Completion Credential: Regular

This graph shows how many years it took a student to earn a high school completion credential. It is a count of completers in the selected year, not a rate. Most students complete high school in 4 years. Some may complete in more or less time.

Filter Criteria:			
Group by	[All Students]	School Year	2021-22
Completion Credential	Regular	Non-Completer Status	[All]
District	Menomonee Falls	School Type	[All Types]
School	[All Schools]		



Total of 4 row(s) with 10000 Row Limit

Group By	Years to Completion	Students in Group	Student Count	Percent of Group
All Students	4 Years	356	348	97.8%
All Students	5 Years	356	4	1.1%
All Students	6 Years	356	1	0.3%
All Students	7 Years	356	3	0.8%



**MENOMONEE FALLS
SCHOOLS**

Engage
Learn
Improve

Graduation Rate

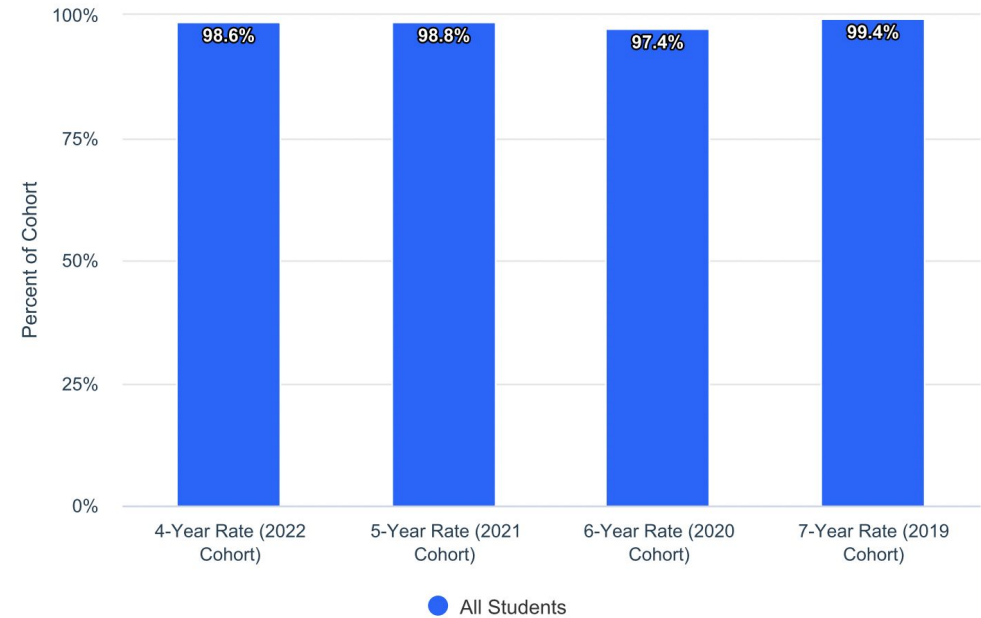
HS Completion Rates by [All Students] (2021-22)

Completion Credential: Regular

This graph shows the percentage of students who complete high school with their adjusted cohort and earn a credential. A cohort is a distinct group of students who enter 9th grade together, similar to a "graduating class" with adjustments. The 4-year rate is the percentage of students who

Filter Criteria:

Group by	[All Students]	School Year	2021-22
Completion Credential	Regular	Non-Completer Status	[All]
District	Menomonee Falls	School Type	[All Types]
School	[All Schools]		



Total of 4 row(s) with 10000 Row Limit

Grad Year Rate (Cohort)	Group By	Group Count	Student Count	Group Percent
4-Year Rate (2022 Cohort)	All Students	357	352	98.6%
5-Year Rate (2021 Cohort)	All Students	326	322	98.8%
6-Year Rate (2020 Cohort)	All Students	306	298	97.4%
7-Year Rate (2019 Cohort)	All Students	348	346	99.4%



**MENOMONEE FALLS
SCHOOLS**

Engage
Learn
Improve

Graduation Rate

HS Non-Completion Rates by [All Students] (2021-22)

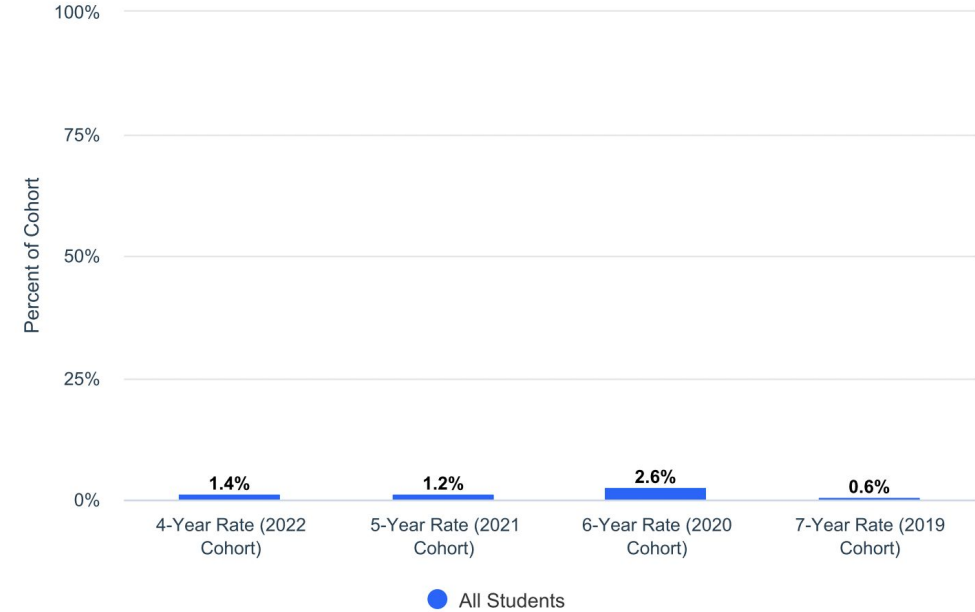
Non-Completer Status: [All]

This graph shows the percentage of students who do not complete high school with their adjusted cohort and earn a credential. A non-completer is any student who reached the end of the 4-, 5-, 6- or 7-year timeframe without earning a high school completion credential. Non-completers have 3

Filter Criteria:

Group by [All Students]
Completion Credential Regular
District Menomonee Falls
School [All Schools]

School Year 2021-22
Non-Completer Status [All]
School Type [All Types]



Total of 4 row(s) with 10000 Row Limit

Grad Year Rate (Cohort)	Group By	Group Count	Student Count	Group Percent
4-Year Rate (2022 Cohort)	All Students	357	5	1.4%
5-Year Rate (2021 Cohort)	All Students	326	4	1.2%
6-Year Rate (2020 Cohort)	All Students	306	8	2.6%
7-Year Rate (2019 Cohort)	All Students	348	2	0.6%



**MENOMONEE FALLS
SCHOOLS**

Engage
Learn
Improve

Welcome New Staff!



WELCOME



**MENOMONEE FALLS
SCHOOLS**

Engage
Learn
Improve

New Staff

HEATHER APRILL - EDUCATIONAL ASST-SPEC ED @ BF
ERIN ASHENHURST - OCCUPATIONAL THERAPIST @ VV/BF
HEATHER BARNES - 1ST GR TEACHER @ BF
CAROLYN BJORKLUND - EDUCATIONAL ASST @ NMS
KORIE BLACKSTON - KITCHEN ASST @ BF
TERRY BOTHUN - GERMAN TEACHER @ HS
SUE BOURASSA - KITCHEN ASST @ VV
MEGAN BROWNFIELD - SPECIAL ED TEACHER @ RS
ANNETTE BUSALACCHI - SPECIAL ED TEACHER @ NMS
LEAH DAKE - EDUCATIONAL ASST @ RS
ROSALIE DAVIS - EDUCATIONAL ASST @ VV
MICHELE DEFNET - SPECIAL ED TEACHER @ RS
SHERYL DEMIK - EDUCATIONAL ASST-SPEC ED @ HS
CARMEN DEPILO - SPECIAL ED TEACHER @ HS
BARBARA EDER - EDUCATIONAL ASST-SPEC ED @ BF
SHAKAYLA EVANS - CUSTODIAN @ BF/SL
NELLIE FARRELL - SCHOOL COUNSELOR @ BF
CYNTHIA FRENCH - EDUCATIONAL ASST-SPEC ED @ NMS
SHAINA GAGLIONE - SPECIAL ED TEACHER @ RS
KARISSA GALASKA - ART TEACHER @ BF/HS
AUDREY GALASSI - SPECIAL ED TEACHER @ NMS
JUSTIN GOFFARD - PRINCIPAL @ BF
KYLA GROSSENBAACH - SPECIAL ED TEACHER @ HS
JENNIFER HEIN - EARLY LITERACY COACH @ BF
KYLIE HIBBS - SCIENCE TEACHER @ NMS
BROOKLYN HOFMAN - SOCIAL WORKER @ HS
MELISSA JABLONICKY - 4TH GR TEACHER @ RS
BROOKLYN JUSTINGER - SCHOOL PSYCHOLOGIST @ RS/VV/DO

JOHN KASHIAN - TECH ED TEACHER @ HS
MATTHEW KOHL - EDUCATIONAL ASST-SPEC ED @ HS
FIELD LEHMANN - ART TEACHER @ SL/VV
AMBER LOHMAN - EDUCATIONAL ASST-SPEC ED @ HS
LISA MATZUK - KITCHEN ASST @ VV
ERIN MCMAHON-TOCCO - 2ND GR TEACHER @ SL
LOGAN MEYER - BUSINESS TEACHER @ HS
SUSAN MICHIELUTTI - EDUCATIONAL ASST @ SL
KATHRYN NIEMIEC - EDUCATIONAL ASST @ BF
TAYLOR OHM - PHY ED TEACHER @ NMS
AMBER PROCTOR - MATH TEACHER @ HS
JACOB RICHMOND - ENGLISH TEACHER @ HS
SUJATA SARKAR - EDUCATIONAL ASST @ BF
JOSEPH SCHMITZ - PHY ED TEACHER @ HS
SAMANTHA SCHROEDER - 5TH GR TEACHER @ VV
NICOLE SIKORA - 1ST GR TEACHER @ BF
DANYEL SMITH - EDUCATIONAL ASST @ RS
HEIDI SPINGOLA - SECONDARY LITERACY COORDINATOR @ NMS/HS
RACHEL TAMEZ - 2ND GR TEACHER @ BF
CHRISTINE WARD - OCCUPATIONAL THERAPIST @ DW/SL/RS/HS
MACKENZIE WELNAK - 1ST GR TEACHER @ BF
MARY JO WIEBEL - EDUCATIONAL ASST @ SL
MICHELLE WILSON - MATH TEACHER @ HS
SOPHIA WOYCHIK - EL TEACHER @ SL/NMS
AMY YARCHO - SPECIAL ED TEACHER @ HS
AMY ZOLLITSCH - 3RD GR TEACHER @ VV



**MENOMONEE FALLS
SCHOOLS**

Engage
Learn
Improve

National Board Certified Employees

Katelyn Araya

Sarah Holst

Denise Johnstone

James Nitz

Corynn Nordstrom

Jeff Pitrof

Julie Poetzel

Tony Pritchard

Karen Richie

Erich Rutsch

Chris Schraeder

Mike Tamas



**MENOMONEE FALLS
SCHOOLS**

Engage
Learn
Improve

Division Leaders

Amy Riebel, Director of Curriculum, Learning, and Analytics

Caitlin Windler, Director of Finance & Operations

Leia Scoptur, Director of Human Resources

Chris Carlton, Director of Facilities

Jason Husslein, Director of Community Education & Recreation (CE & Rec)

Amy Swanson Kieser, Director of Communications & Community Outreach

Nikki Williams, Director of School Nutrition

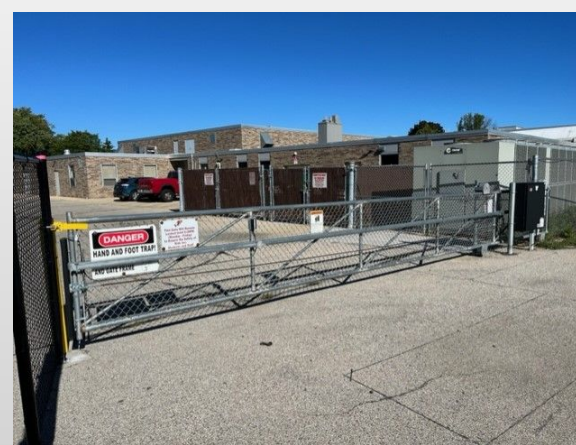
Troy Seyfert, Director of Technology

Dr. Laura Schieffer, Director of Pupil Services

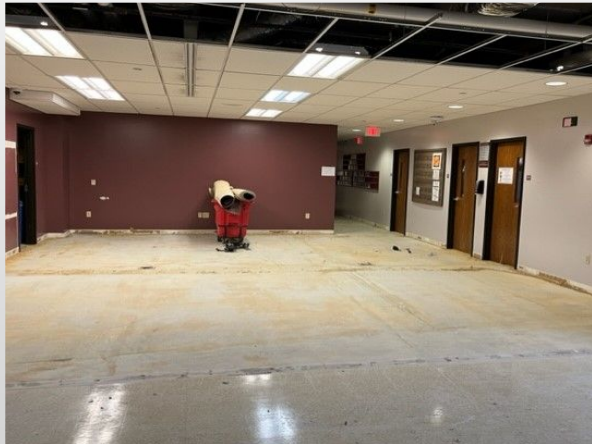
Brian Heimark, Director of Athletics

[illegible]

Improving and Maintaining Facilities!



Improving and Maintaining Facilities!



#15



**BEST SCHOOL DISTRICT
IN WISCONSIN**

#FALLSPRIDE



**MENOMONEE FALLS
SCHOOLS**

Engage
Learn
Improve



**MENOMONEE FALLS
SCHOOLS**

Engage
Learn
Improve



288

high school students are
enrolled in one of five
academies:

- Healthcare Academy
- Design, Communication & Media Academy
- Business Academy
- STEM
- Future Educators

109

AP Scholars



**MENOMONEE FALLS
SCHOOLS**

Engage
Learn
Improve

\$425,000

Community Scholarships



**MENOMONEE FALLS
SCHOOLS**

Engage
Learn
Improve

North Middle School Athletic Excellence in the Spring



North Middle School Athletic Excellence in the Spring





- Early Literacy
- Art Education
- Disability & Special Education Resource Center
- Tax Bill, Finance, and Budget
- State Report Card
- School Safety

with John Mercure

FBLA @ MFHS 9X State Champions!



FBLA North 7X State Champions!



Supporting Families in Need Resource Reach-Out Room



**MENOMONEE FALLS
SCHOOLS**

Engage
Learn
Improve



- Created a web page of resources to provide our school community with important information to help navigate and support the mental wellness of our students and their families.
- School counselors at each level also created web resources specific to mental wellness.
- On-site therapists at each level provide telehealth and distance/virtual options.

ENGAGE LEARN IMPROVE

Relentless pursuit of excellence, one person at a time.